



Regional innovation scheme for zero waste extraction of critical raw materials

October 2020

RIS-RECOVER Newsletter, Volume2, Number 1

In this issue:

- Introduction
- In focus - raising awareness events
- Towards the first webinar
- Future project activities

Useful links:

<http://ris-recover.zag.si/>
<https://eitrawmaterials.eu/>

External participants

We are looking for external participants in the RIS-RECOVER project. All interested institutions please join us in "Building Knowledge Community" by "stakeholder log in" on the web page:
<http://ris-recover.zag.si/>

Building Knowledge Community:

For regular updates and progress about the project, please register as a relevant stakeholder on the project's web pages:

Digital version:

<https://ris-cure.eu/ris-recover/form.html>

or you can fulfil and send printed version from:

<http://ris-recover.zag.si/>

Save the date

RIS RECOVER will be at Adria Innovation Day 24.11.2020

<http://eitrawmaterials-rcadria.eu/>
Register and join us!

RIS RECOVER webinars in November 2020:

- 05.11.2020 (10:00 am CET)
- 12.11.2020 (10:00 am CET)
- 19.11.2020 (10:00 am CET)
- 26.11.2020 (10:00 am CET)

Please register via e-mail:
webinar.ris-recover@zag.si

Contact Us

E-mail:

ris.recover@zag.si

Web page:

<http://ris-recover.zag.si/>

Introduction

Mining tailings and metallurgical heaps can pose a significant risk to the environment due to their large quantity and composition, while on the other hand they are valuable sources of secondary raw materials (SRM), including critical raw materials. The main objective of the RIS-RECOVER project is to develop a **roadmap for the zero waste extraction of SRMs and metals from mining tailings and metallurgical heaps in ESEE** and to **build the capacity of T-shaped entrepreneurs and actors along the value chains**. This is to be achieved, among other activities, through several awareness-raising events. Two awareness raising events are planned for 2020. Due to Covid 19 restrictions will be organized as online webinars. More information can be found below.

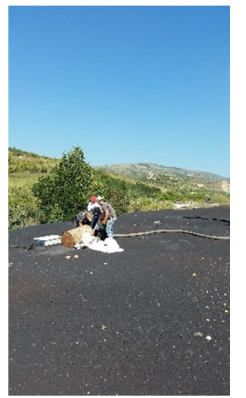


In focus - raising awareness events

The webinars are organized every **Thursday in November at 10:00 am**. They last one hour with three different speakers who will present specific topics related to the RIS RECOVER project.

Specific topics

1. **Mining tailings and metallurgical heaps in Europe:** 5th November, 10:00 am (CET)
2. **Hydrometallurgy / heap leaching:** 12th November, 10:00 am (CET)
3. **Pyrometallurgy:** 19th November, 10:00 am (CET)
4. **Zero waste approach (valorization in construction products):** 26th November, 10:00 am (CET)



The webinars can be followed via the ClickMeeting online tool. You can register by e-mail at webinar.ris-recover@zag.si. Please include the title of the webinar you are applying for in your registration. We encourage you to participate and expand your knowledge.

Towards the first webinar: Mining tailings and metallurgical heaps in Europe

The first webinar focusing on the mining tailings and metallurgical heaps that represent a substantial risk to environment while on the other hand can be valuable sources of secondary raw materials, including critical raw materials. The RIS-RECOVER project team organizes a webinar series to disseminate the results of the project, together with results from other research projects around mining tailings and metallurgical heaps, with the first webinar focusing on hydrometallurgy and heap leaching.

First webinar agenda

ENVIRONMENTAL IMPACT OF METAL PRODUCTION PROCESSES IN THE REPUBLIC OF NORTH MACEDONIA Trajče Stafilov and Robert Šajn
SAMPLING CAMPAIGN IN THE RIS-RECOVER PROJECT
Aleksandra Trenčovska and Dobriela Rogožareva Stavreva
REPROCESSING OF METALLIC MINING WASTE: CURRENT DRIVERS
Françoise Bodénan

Future project activities

In the next period the project consortium will continue with the following tasks:

- presentation of the project activities during the Geological and Ecological congresses in North Macedonia in 2021
- assessment of environmental and socioeconomic impacts
- on-line training, supported by video material from laboratories/field/pilots of the project partners etc.
- business modeling, analysis of investment opportunities and legislative routes
- Regional Innovation Scheme